

This custom kit is manufactured by Snowbear Limited to fit:

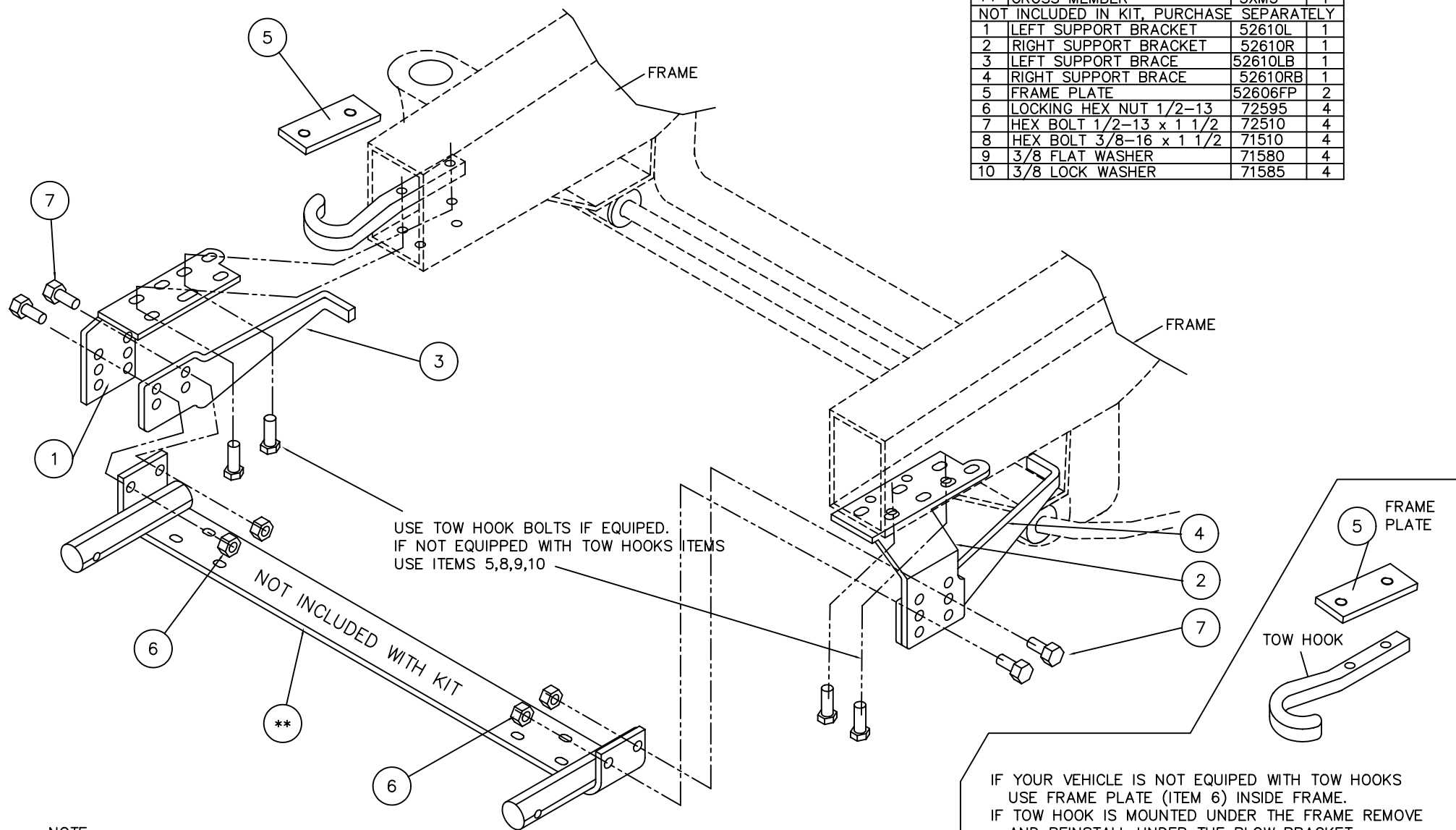
S10, S15 PICKUP, S-JIMMY, S-BLAZER

MOUNT ASSEMBLY (4 x 4) YEAR 1982 to NEWER

ISUZU HOMBRE MOUNT ASSEMBLY

(4 x 4) YEAR 1996 and NEWER

ITEM	DESCRIPTION	PART #	QTY.
**	CROSS MEMBER	5XM5	1
NOT INCLUDED IN KIT, PURCHASE SEPARATELY			
1	LEFT SUPPORT BRACKET	52610L	1
2	RIGHT SUPPORT BRACKET	52610R	1
3	LEFT SUPPORT BRACE	52610LB	1
4	RIGHT SUPPORT BRACE	52610RB	1
5	FRAME PLATE	52606FP	2
6	LOCKING HEX NUT 1/2-13	72595	4
7	HEX BOLT 1/2-13 x 1 1/2	72510	4
8	HEX BOLT 3/8-16 x 1 1/2	71510	4
9	3/8 FLAT WASHER	71580	4
10	3/8 LOCK WASHER	71585	4



NOTE:

THE TOW HOOK AND SKID PLATE MUST BE REMOVED AND RE-ATTACHED
REUSE THE EXISTING BOLTS TO ATTACH THE SUPPORT BRACKETS.
THIS MOUNT FITS MANY MODELS. USE 2 HOLES WHICH BEST FIT TO YOUR VEHICLE.

IF YOUR VEHICLE IS NOT EQUIPPED WITH TOW HOOKS
USE FRAME PLATE (ITEM 6) INSIDE FRAME.
IF TOW HOOK IS MOUNTED UNDER THE FRAME REMOVE
AND REINSTALL UNDER THE PLOW BRACKET.
IF TOW HOOK IS MOUNTED INSIDE THE FRAME USE THE
TOW HOOK TO ATTACH PLOW BRACKET TO THE FRAME.